

Sergei Rachmaninoff  
Symphony No. 1 in D Minor, Op. 13

I

Corno IV in F

Grave

fff

rit Allegro ma non troppo

pp

12 Cello, Cb.

pp

rit. a tempo

1

13

Ob. I

pp

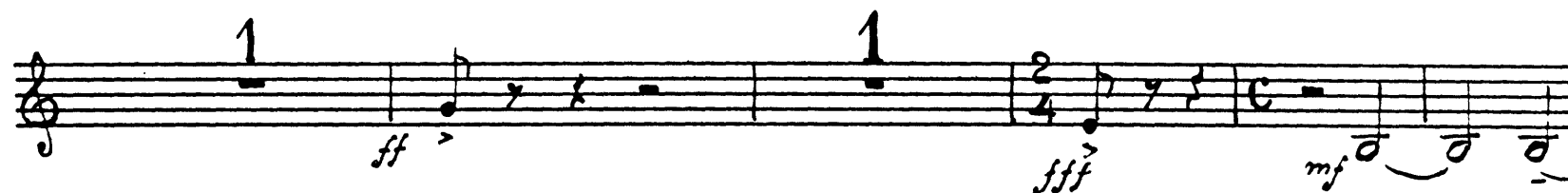
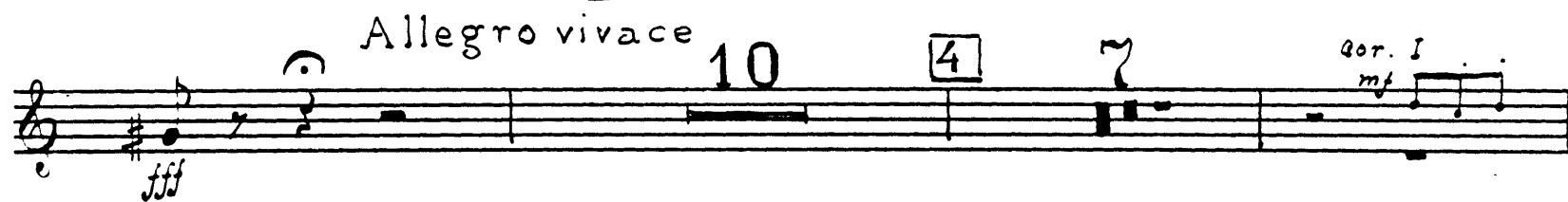
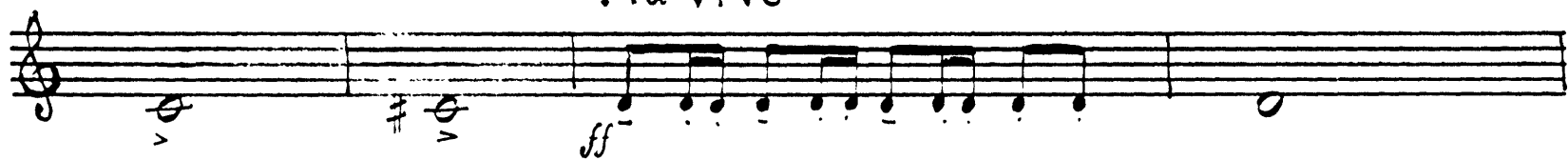
2

p pp f pp ff dim.

2

pp cresc. poco a poco f

Più vivo



Rachmaninoff — Symphony No. 1

- 3 -

Maestro

Allegro vivace

[senza rit.]

3. Corni

Rachmaninoff — Symphony No. 1

- 4 -

11 12 12 8 rit. 3 Fl. <sup>ti</sup> Moderato

2 3 Fl. <sup>pp</sup>

riten. <sup>pp</sup> Meno mosso

13 rit Moderato

3

*f* *mf* *dim.* *p*

Allegro molto

*sf* *ff*

3 6 4 *ff*

Più vivo

*fff* *mf*

14 3

15 2 3 1

*pp*

Rachmaninoff — Symphony No. 1

- 5 -

3 1 16

17

*ff* *cresc.*

*cresc.* *fff*

*Allegro vivace*

*dim.* *sf* *sf* [*f*]

*sf* *fff* *ff*

1 2

*p* *ff* *cresc.*

*ff*

*Allegro animato* II

11

*Cor. I II*

1 2

*sf*

18

8

Fag

ppp

19

5

Cor. I. II

1

3

20

9

Fag

sf

ppp

21

2

ff

f

dim.

pp

22

1

sf

cresc.

pp

cre. seen. do

23

1

sf

sf

sf

Rachmaninoff — Symphony No. 1

- 7 -

4

Cor. II 6

ff

ppp

24

5

Cor. I, II

1

3

25

10

Fag. pp

26

ppp

Meno mosso 8

Cor. I, II 8

27

6

Celli C-B.

5

ff

mf

2

2

3

28

12

V-le

Viola

Rachmaninoff — Symphony No. 1

- 8 -

pp

*cresc.*

**29**

2 V-ni soli

**12**

2 V-ni soli

*ff*

*cresc.*

**Tempo!**

*cresc.*

*fff*

*dim.*

**11**

**30**

*p*

**1**



Rachmaninoff — Symphony No. 1

- 9 -

1

*mf*

5

*pp*

31

6

*Cor. I. II*

4

32

9

*Fag* *pp*

33

*ppp*

2

2

*dim.* *pp* *ff* *f*

34

1

*dim* *sf*

7

*cresc.* *sf*

*pp* *cresc.* *seen - do*

1

*f* *sf* *sf* *sf*

10

*sf* *p*

ppp

36

5

Cor. I. II

1

13

Fag

37

ppp

5

38

2

ff

1

p

2

ff

1

10

pp

### III

arghetto

ppp

2

12

39

*p* *mf* *pp*

*Più mosso* *rit.* *a tempo*

40

*a tempo* *rit.* *a tempo* *rit.* *a tempo*

41 *Vni I* *dim.*

*rit.* *Largo un poco* *Con sord.* *pp* *cresc.*

*ff* *dim.* *pp* *cresc.*

*dim.* *pp* *cresc.*

42

*pp* *dim.* *pp* *cresc.*

*p* *Con moto* *ff* *p*

6 *pp* *Tempo I* *pp*

2 9 5 43 1

Cor. I II III

rit. 44 a tempo

p mf

dim. 45

13 rit. 4

# IV

## Allegro con fuoco

1

ff

ff Marciale (sempre marcato)

2 1

fff

46

fff

Moto primo

*ff marcato*

Con moto

ritardando

Con anima

47

48

49

*f* *ff*

*acceler.*

Più vivo

*p* *mf* *fff*

50

*fff* *f*

*rit.* *Allegro mosso* *fff*

3 6 18

Cor. I.

*mp* *dim.* *pp* *dim.*

51

*f* *fff*

3

- 15 -

p *b a . a . a . b a . a . a . a . a . cresc.*  
*mf a . a . a . a . a . a . cresc.*  
*dim a . a . p a . a . dim a . a .*  
 Piu Vivo 15 52 ob  
 Corni III 16 Vini II. Celli *dim* Tr. ni  
 Con moto 13  
 53 *pp* *cresc.*  
 Meno mosso. Commodo  
*ff* *p* 54  
 7  
*mf*

1 15 *acceler. 4*

*mf Allegro con fuoco* *pp* *Fag.*

Celli. C. B.

55 *mf*

56 *f*

6 *sff* *sf*

*sff* *sff* *ff marcato*

4

*Con moto* *p*

2



Musical score for Rachmaninoff's Symphony No. 1, page 17. The score is written for two staves, likely piano and violin. It features various musical notations including notes, rests, and dynamic markings. Key markings include *a tempo*, *ritard*, *p*, *cresc.*, *fff*, *dim.*, *Con moto*, *Presto*, and *ff*. Measure numbers 57, 58, 59, and 60 are boxed. The score ends with a double bar line and a fermata.

- 18 -

**Largo**  
*Con Sord.*

*mf* *fff* *mf* *fff*

*mf* *fff* *mf* *fff* *pp* *cresc.*

*ritard.* **Grave**

*ff* *cresc.* *ffff*

*fff*

**Con moto**

**4**

*fff* *v*

*fff* *v*